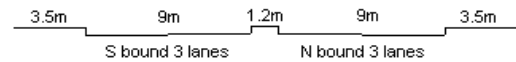


YEAR

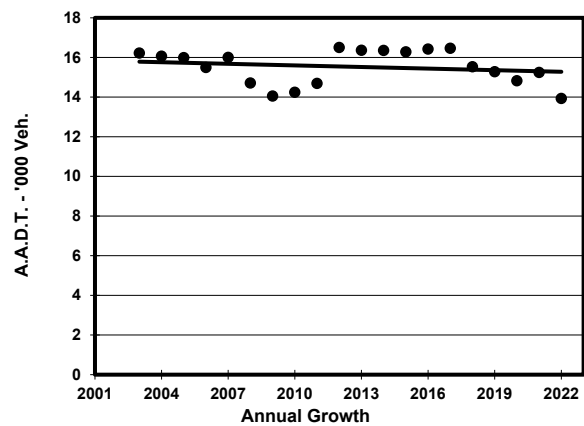
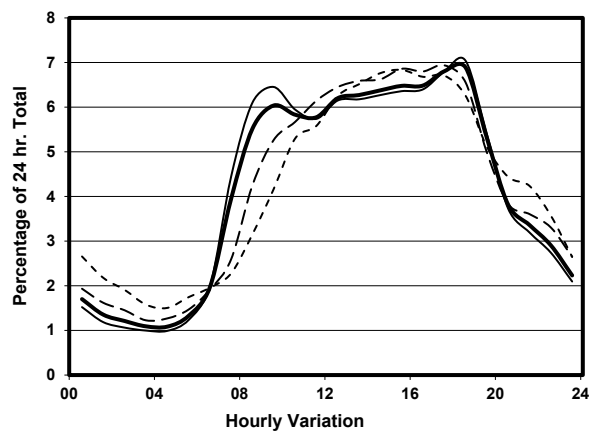
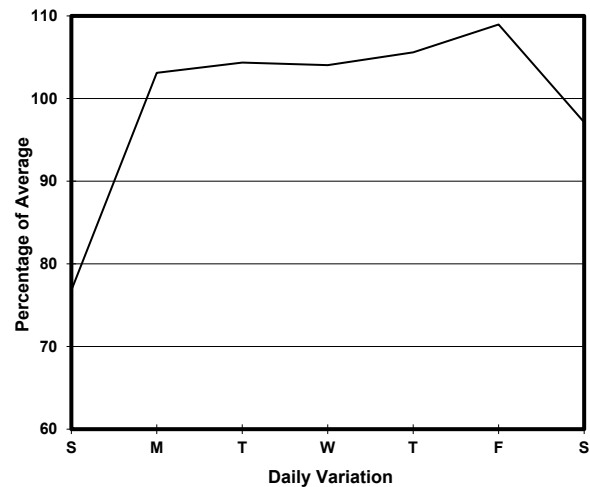
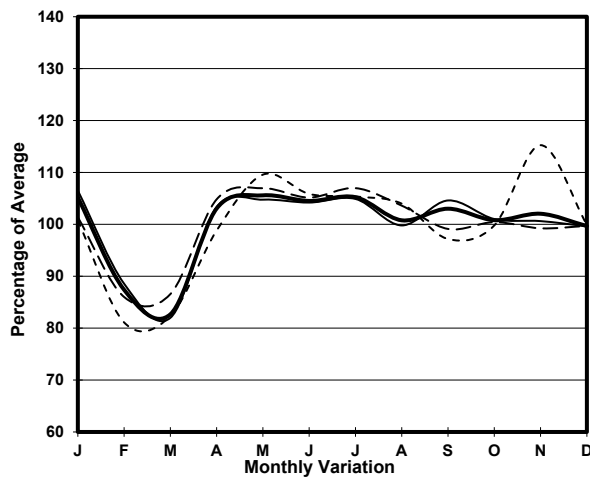
2022

LINK

LAI CHI KOK RD (from TONKIN ST to HING WAH ST)

CORE STATION  
ROAD NETWORK  
ROAD TYPE3008  
MAJOR  
PRIMARY DISTRIBUTOR

## 1. TRAFFIC FLOW VARIATION AND GROWTH



— All day    - - - - - Mon.- Fri.    . . . . . Sat.    - . - . - Sun.

## 2. TRAFFIC CHARACTERISTICS (BY DIRECTION)

Parameter	All - Day	Mon. - Fri.	Sat.	Sun.
<b>SOUTH BOUND</b>				
A.A.D.T.	5200	5410	5310	4510
R 12 / 24 - %	70.3	71.4	68.9	65.5
R 16 / 24 - %	85.9	86.7	84.7	82.4
AM Peak Hour	0900-1000	0900-1000	0900-1000	0900-1000
One-way flow at AM peak hour	280	310	270	170
T - % (AM)	-	-	-	-
PM Peak Hour	1700-1800	1800-1900	1700-1800	1700-1800
One-way flow at PM peak hour	340	360	360	310
T - % (PM)	-	-	-	-
Prop.of commercial vehicles - 16 hr.	-	-	-	-
<b>NORTH BOUND</b>				
A.A.D.T.	8730	9430	8410	6300
R 12 / 24 - %	74	75.3	71.9	67.2
R 16 / 24 - %	89.3	90.2	87.6	84.9
AM Peak Hour	0900-1000	0900-1000	0900-1000	0900-1000
One-way flow at AM peak hour	560	650	460	280
T - % (AM)	-	-	-	-
PM Peak Hour	1800-1900	1800-1900	1700-1800	1600-1700
One-way flow at PM peak hour	620	690	590	420
T - % (PM)	-	-	-	-
Prop.of commercial vehicles - 16 hr.	-	-	-	-

## 3. OTHER INFORMATION AND COMMENT